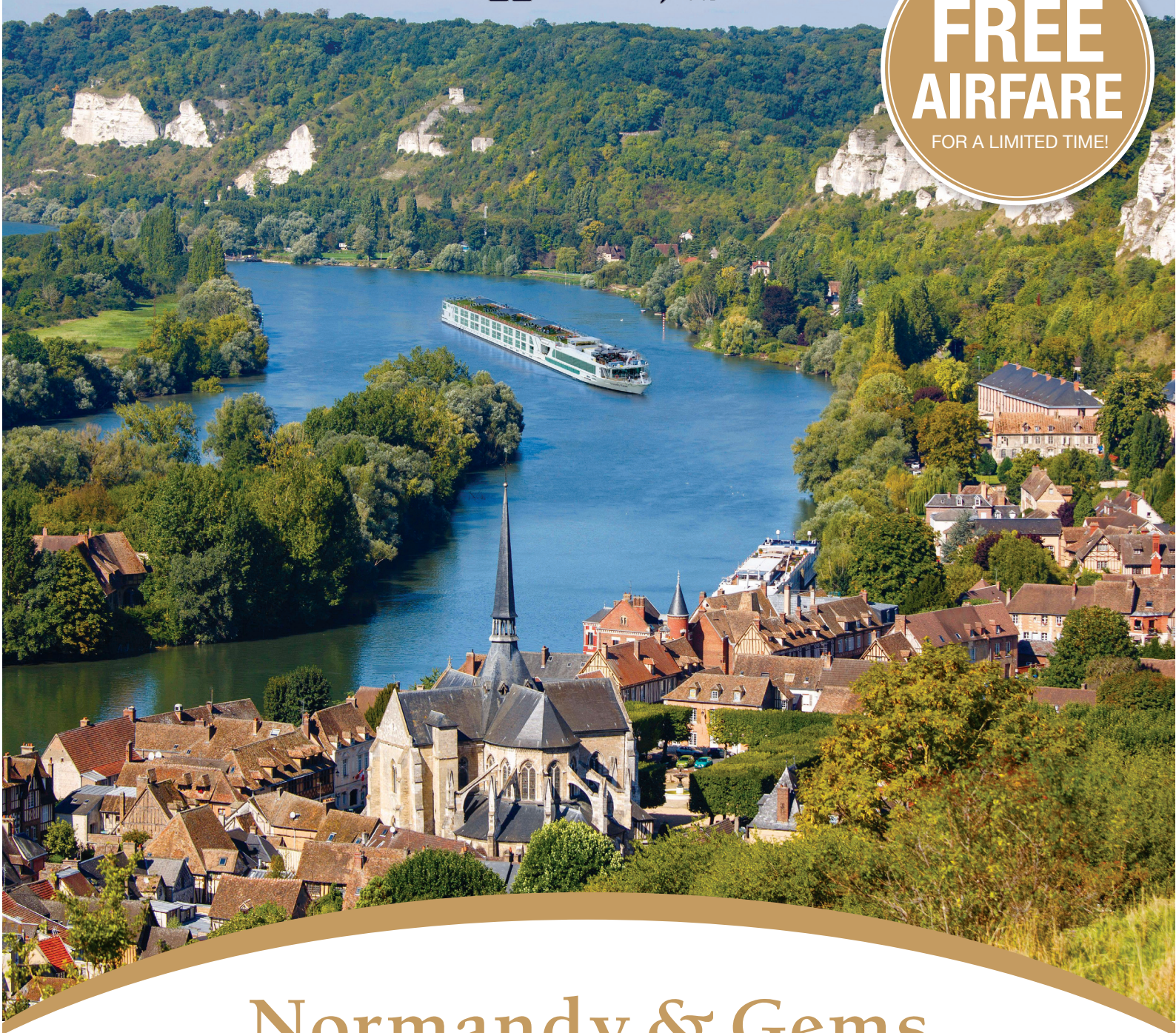


**FREE
AIRFARE**
FOR A LIMITED TIME!



Normandy & Gems of the Seine River Cruise

Tour Dates: July 14 - 25, 2024

Normandy & Gems of the Seine River Cruise



The amazing astronomical clock in Rouen



See the historic Normandy beaches

DAY 1 Depart the USA: Depart the USA on your overnight flight to Paris, France.

DAY 2 Paris, France - Embark the *MS Scenic Gem*: Welcome to Paris, the City of Lights. The French capital is home to some of the world's most famous monuments, from the Eiffel Tower to the Arc de Triomphe; museums that contain masterpieces such as Da Vinci's Mona Lisa and Van Gogh's Self Portrait; and iconic public spaces from elegant tree-lined Champs-Elysee to its urban oasis Jardin des Tuileries. Upon arrival, transfer to the *MS Scenic Gem* where your friendly crew await to welcome you on board. Relax in your luxurious suite or take a beverage to the Sun Deck. **Meals: D**

DAY 3 Les Andelys: This morning will be spent cruising towards Les Andelys. This riverfront medieval town is set on one of the prettiest bends of the Seine, resplendent with well-preserved Norman-era houses and exquisite public buildings and overlooked by the imposing ruins of King Richard the Lionheart's castle, Château Gaillard. **Freechoice:** Join a hike with a difference and visit Château Gaillard, OR, journey to Lyons la Forêt, one of the most beautiful villages of France, and sample local cider. OR, cycle through this beautiful village. **Meals: B, L, D**

DAY 4 Rouen: Rouen is the vibrant capital of the Normandy region. With a fascinating history of Roman and Viking settlement, it has also played a pivotal place in history as the town where Richard the Lionheart was crowned Duke of Normandy and Joan of Arc was burnt at the stake. Much of Rouen was sadly destroyed in World War II, but much of the city has been faithfully restored, including the exquisite Old Town. It's an engaging and historically rich destination, packed with museums, stylish bistros and coffee shops, and a wealth of churches, including the famed 12th century Rouen Cathedral. **Freechoice:** Enjoy a walking tour of Rouen and admire the city's half-timbered houses and the historic Rouen

Cathedral OR learn about the Viking Warlord Rollo 'the Walker', who will host a guided walking tour through the medieval laneways of Rouen. This region is also the gateway to the historic Western Front, and this afternoon you'll gain fascinating insights into the Somme battlefields and learn about what life was like for a soldier during WWI. Tonight, a local pâtissier will come on board with a selection of fine desserts. **Meals: B, L, D**

DAY 5 Rouen: Freechoice: Get a glimpse of what the Somme battlefields might have been like for those caught up in this terrible World War I battle, which claimed the lives of more than 150,000 Commonwealth soldiers. OR, Visit the Australian National Memorial, containing the Sir John Monash Center then after lunch visit the Lochnagar Crater before choosing to visit the Theipval memorial and Caterpillar Valley Memorial, dedicated to the New Zealand citizens who perished during the Battle of the Somme or the Newfoundland memorial park. OR, stay in Rouen and visit the Museum of Fine Arts with a local guide. See the extensive collection of paintings, sculptures, drawings and objects from every genre of art. **Meals: B, L, D**

DAY 6 Honfleur: This morning your Scenic Space-Ship will dock right in the centre of Honfleur, a colourful coastal town that has been described as having one of the prettiest harbours in France, Le Vieux Bassin. **Freechoice:** Explore Honfleur on a walking tour, with its quaint architecture and relaxed coastal atmosphere, OR, visit charming villages and taste traditional Cheeses and Calvados. Tonight, gain unique insights of D-Day and the ensuing battles during a lecture. **Meals: B, L, D**

DAY 7 Honfleur: Freechoice: Visit the historic Normandy beaches, the site of the D-Day landings that took place in June 1944. Here choose from three options: Explore the involvement of the British forces as you visit the Bayeux War Cemetery,

Museum of the Battle of Normandy and the Landing Museum in Arromanches, finishing at the British Normandy memorial, OR learn about the US contribution to the battle at Utah Beach and Memorial before a visit to the Normandy American cemetery and visitor center, OR view the battle through the eyes of Canadian forces as you visit Juno Beach Center, a museum that focuses on the Canadian war effort as well as the Bény-sur-Mer Canadian cemetery and Pegasus Bridge & Museum. OR, visit Bayeux and its famous Tapestry, a hand embroidered masterpiece. **Meals: B, L, D**

DAY 8 Caudebec-En-Caux: Freechoice: Visit Fécamp and its mighty Benedictine palace or visit the beautiful seaside town of Étretat, sitting proudly between dramatic rock faces. OR, travel to the hilltop village of Bolbec and view fabrics at the fascinating Textile Museum before visiting a traditional farm nearby, OR, join a guided cycling tour to the charming village of Villequier and visit the Victor Hugo Museum. **Meals: B, L, D**

DAY 9 Vernon: Freechoice: Visit Giverny and Monet's former residence and gardens. Many of the artists most famous art works were inspired by this impressive location, or get your heart pumping on a self-guided cycle through Vernon to Giverny where you have the opportunity to visit Monet's garden. After exploring these spectacular gardens you may feel inspired to join a painting class on board this afternoon. **Meals: B, L, D**

Scenic Enrich: Built into a steep rock face overlooking the Seine River and the small village bearing the same name, Château de La Roche-Guyon is a sight to behold. Experience the opulence and grandeur of yesteryear as you enjoy a classical concert performed by the region's most reputable musicians.

DAY 10 Conflans - Paris: Freechoice: Freechoice: Discover the charms of Auvers-sur-Oise and see Vincent van Gogh's room, or visit the magnificent Chantilly Castle. Alternatively, admire spectacular scenery as you canoe along the River Oise. his afternoon you'll spend time on board as your Scenic Space-Ship cruises back to Paris. **Meals: B, L, D**

DAY 11 Paris: Freechoice: Walk through the trendy Marais district with a resident or admire the extravagance of the famous Opera Garnier. Alternatively, see the highlights of Paris during a city tour or tour the 17th century estate of Château Vaux-le-Vicomte. This afternoon is free to explore Paris at your own leisure. **Meals: B, L, D**

DAY 12 Paris / USA: Bid 'au revoir' to France and return home with memories of wonderful experiences aboard the *MS Scenic Gem* along the Seine River. **Meals: B**

Itinerary and vessel subject to change.

CRUISE AND HOTEL ACCOMMODATIONS

Days 2 and 11 – Aboard the *MS Scenic Gem*



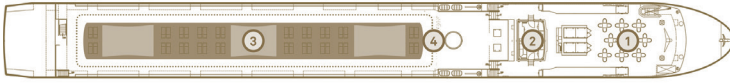
Exceptional Inclusions

- **29 Meals:** 10 breakfasts, 9 lunches and 10 dinners
- **Airport transfers** on tour dates when air is provided by Mayflower Cruises & Tours
- **Free home pickup** and return service on tour dates, when air is provided by Mayflower Cruises & Tours
- **Ten-night cruise** aboard the *MS Scenic Gem*
- **First-class service** by an English-speaking crew
- **Shore excursions** with English-speaking **local guides**
- Personal **listening device** for onboard excursions
- **Scenic Tailormade App** for river commentary and independent exploration
- All meals included onboard with a **variety of international cuisine**
- **Complimentary beverages onboard** ship, all day, every day
- Complimentary **WiFi onboard**
- **Complimentary mini-bar** in all suites – restocked daily
- **Butler service** for all guests
- **All gratuities included**
- Complimentary **e-bikes onboard** for use ashore
- Variety of **onboard evening entertainment**

Scenic Gem

Built: 2014 **Suites:** 62 **Length:** 360 ft. **Crew:** 48 **Passengers:** 124

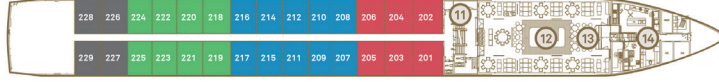
SUN DECK



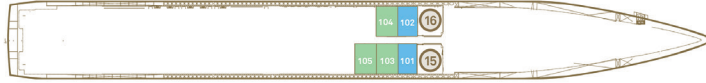
DIAMOND DECK



SAPPHIRE DECK

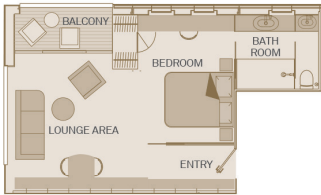


JEWEL DECK



Public Areas and Ship Amenities

- | | |
|-------------------------|-------------------|
| 1 Riverview Terrace | 9 Gift Shop |
| 2 Wheelhouse | 10 Reception |
| 3 Sun Deck | 11 Elevator |
| 4 Walking Track | 12 Crystal Dining |
| 5 Panorama Deck | 13 Table La Rive |
| 6 L'Amour Restaurant | 14 Gallery |
| 7 River Cafe | 15 Wellness Area |
| 8 Panorama Lounge & Bar | 16 Fitness Centre |

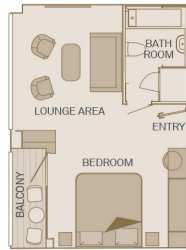


Royal One-Bedroom Suite

455ft²

Including Scenic Sun Lounge

CAT RP

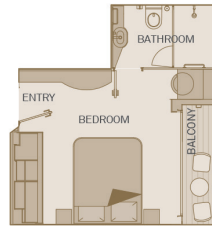


Royal Balcony Suite

305ft²

Including Scenic Sun Lounge

CAT R

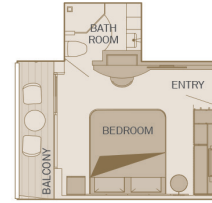


Deluxe Balcony Suite

225ft²

Including Scenic Sun Lounge

CAT PD CAT BD

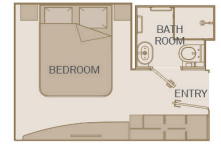


Balcony Suite

205ft²

Including Scenic Sun Lounge

CAT PA P C BA B



Standard Suite

160ft²

CAT D CAT E

Normandy and Gems of the Seine River Cruise

CAT	STATEROOM / SUITE	DECK	July 14 - 25, 2024	
			PER PERSON TWIN	SINGLE ADD
E	Standard Suite	Jewel	\$6,209	+\$4,505
D	Standard Suite	Jewel	\$6,319	+\$4,589
C	Balcony Suite	Sapphire	\$7,309	+\$5,335
BA	Balcony Suite	Sapphire	\$7,419	+\$5,415
B	Balcony Suite	Sapphire	\$7,475	+\$5,455
BD	Deluxe Balcony Suite	Sapphire	\$7,585	+\$5,539
PA	Balcony Suite	Diamond	\$7,529	+\$5,499
P	Balcony Suite	Diamond	\$7,749	+\$5,665
PD	Deluxe Balcony Suite	Diamond	\$7,965	N/A
R	Royal Balcony Suite	Diamond	\$8,855	N/A
RP	Royal One-Bedroom Suite	Diamond	\$10,229	N/A

Pricing includes local Newton pickup, roundtrip DSM airfare, all inclusive, 29 meals, gratuities to guides, drivers and ship staff, and hosted by Janie!



Travelers Protection Plan (TPP) for River Cruises - \$569 OPTIONAL

This nonrefundable fee will provide a refund to you during the instance that you have to cancel your trip. The cancellation has to be for a covered reason (see Plan for details on coverage) and we have to be notified at least one day prior to departure. If you must leave the tour early due to personal illness or the illness or death of an immediate family member, TPP will provide a refund for any unused services after the departure of the tour. Other benefits include medical expenses for illness and injury, emergency transportation, 24 hour hot line and lost or stolen baggage assistance. Return air transportation is included ONLY if your air tickets are purchased through Mayflower Cruises & Tours. Please review the Plan for details on coverage. Should you choose not to purchase our TPP, the following per person cancellation charges will be assessed for all tours and optional excursion costs:

- 91 days or more prior to departure: Deposit Amount
- 90 days to day of departure: 100% of total tour
- No refund on unused portions of the tour

Exclusions: Mayflower Cruises & Tours reserves the right to alter its Refund and Cancellation Policy when a substantial amount of cancellation or postponement of travel is attributable to: conditions resulting from an act of God, natural or man-made disaster, fire, government action, civil disorder, war, hostilities between nations, or unavailability of transportation through no fault of Mayflower Cruises & Tours. *Plan and benefits offered and administered by Trip Mate, Inc.*

FOR RESERVATIONS OR INFORMATION CONTACT:



Janie Haunsperger
(641) 792-1980

janie@jhtraveltours.com
jhtraveltours.com